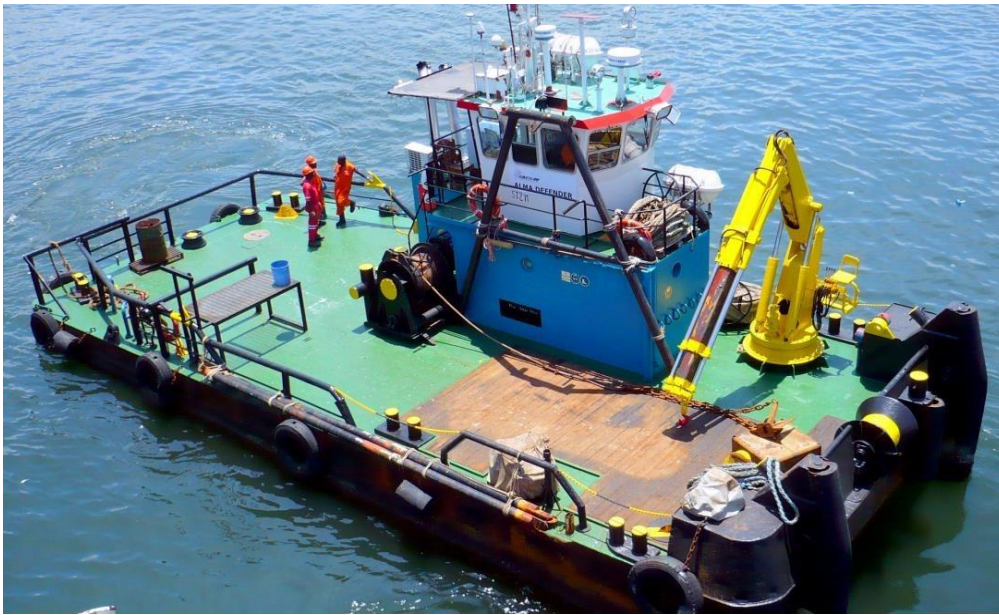


ALMA DEFENDER

Multicat - 1100hp, 12 TBP



CLASSIFICATION / FLAG

| | |
|------------------------|-----------------------------|
| Built | 1995 |
| Flag | Belize |
| Trading Area | Coastal Waters (up to 30nm) |
| IMO | 8434192 |
| Classification Society | Bureau Veritas |
| Class Ship | I + HULL * MACH Special |

PRINCIPAL DIMENSIONS

| | |
|-------------|-------------------|
| Length o.a | 18.63m |
| Breadth o.a | 8m |
| Draft | 1.8m |
| GRT | 81 |
| NRT | 24 |
| Clear Deck | 103m ² |

MISCELLANEOUS

| | |
|----------------------|---|
| Hydraulic Deck Crane | CPS 360M - Harbour : 3.29 tons at 10m - Offshore : 2.3 tons at 10m |
| Towing Winch | 30 mT |

OPTIONAL EQUIPMENT

| |
|--------------------|
| Multi-beam support |
| Inspection ROV |

MACHINERY / PROPULSION

| | |
|-------------------|---|
| Maximum speed | 8 knots |
| Economic speed | 6 knots |
| Main engines | 2x Cummins KTA-19 - 550hp each |
| Propulsion | Twin screw fixed pitch propellers in nozzles |
| Auxiliary engines | 100 Kva + 15 Kva |
| Bollard Pull | 12 Tons |

TANK / STORAGE CAPACITIES

| | |
|-------------|-------------------|
| Fuel | 32 m ³ |
| Fresh Water | 44 m ³ |

NAVIGATION & COMMUNICATION SYSTEMS

Fully equipped

ACCOMMODATION

| | |
|-----------------------|---|
| Berths | 6 |
| incl. double cabins | 3 |
| Fully air conditioned | |

ALMA SHIPPING

Head office: 26 avenue de Saint Cloud 78000 Versailles

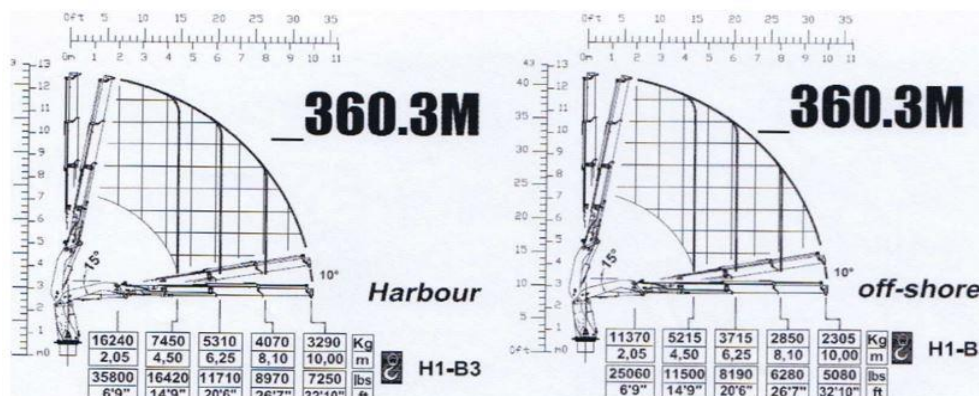
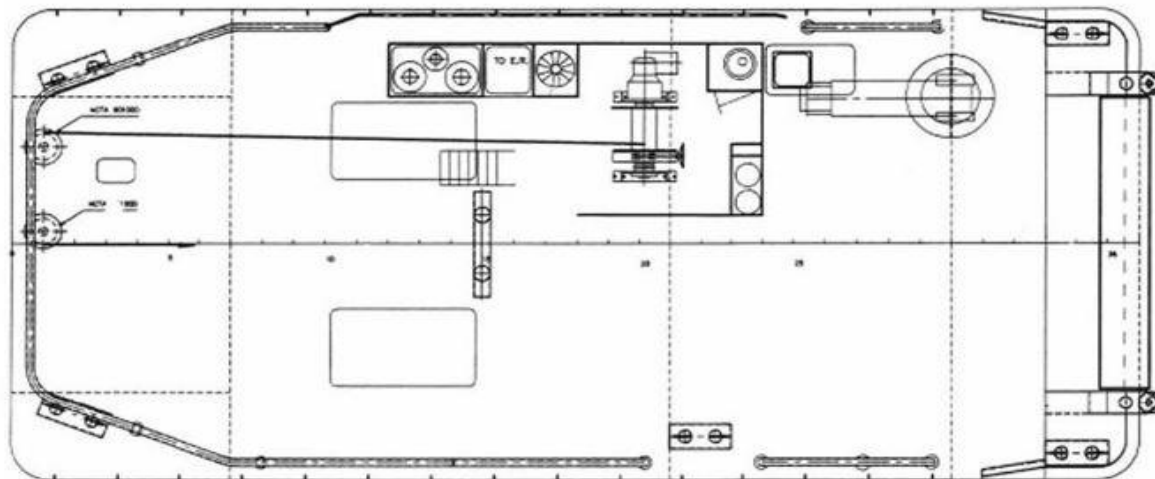
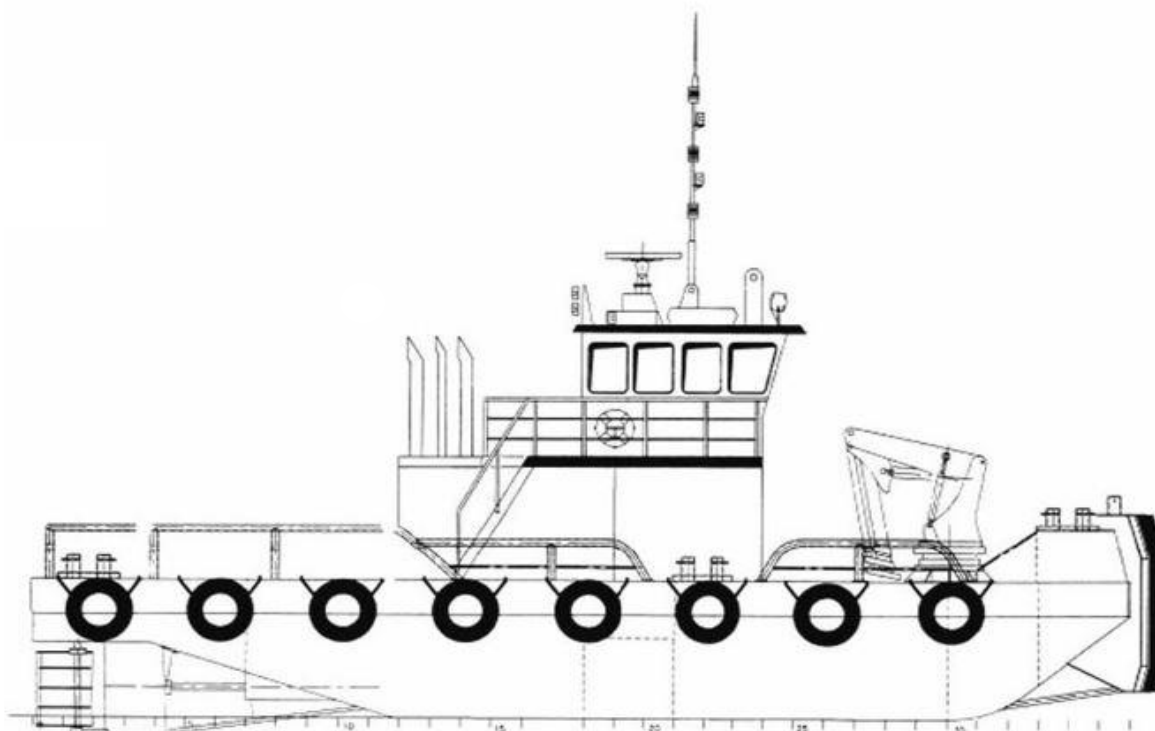
www.almashipping.com / chartering@almashipping.com

*Details are believed
to be correct but
cannot be guaranteed
and are subject to change*

ALMA DEFENDER



Multicat - 1100hp, 12 TBP



ALMA SHIPPING

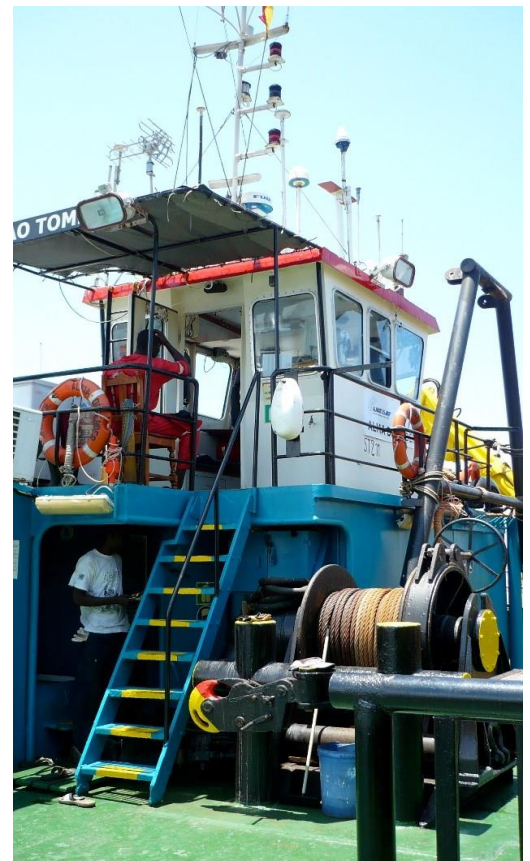
Head office: 26 avenue de Saint Cloud 78000 Versailles

www.almashipping.com / chartering@almashipping.com

*Details are believed
to be correct but
cannot be guaranteed
and are subject to change*

ALMA DEFENDER

Multicat - 1100hp, 12 TBP



ALMA SHIPPING

Head office: 26 avenue de Saint Cloud 78000 Versailles

www.almashipping.com / chartering@almashipping.com

*Details are believed
to be correct but
cannot be guaranteed
and are subject to change*