



# ALKA NEVA

RBB 700 20B

Support/Patrol/Crew Vessel



## CLASSIFICATION / FLAG

Built	2021 - The Netherlands
Flag	TBA
IMO	TBA
Call sign	TBA
Certification	Built and designed according directive 2003/44/EC

## PRINCIPAL DIMENSIONS

Length overall	7 m
Breadth overall	2,35 m
Draft hull	0.40 m
Dry weight	1200 kg
Fuel capacity	2 x 90l fixed tanks

## MACHINERY / PROPULSION

Maximum speed	35 knots
Outboard engine	2 x Yamaha F70AETX

## MISCELLANEOUS

Indestructible Rigid Buoyancy Boat (RBB)
Led navigation and work lights
Hand held searchlight
2 + 2 fender jockey seats

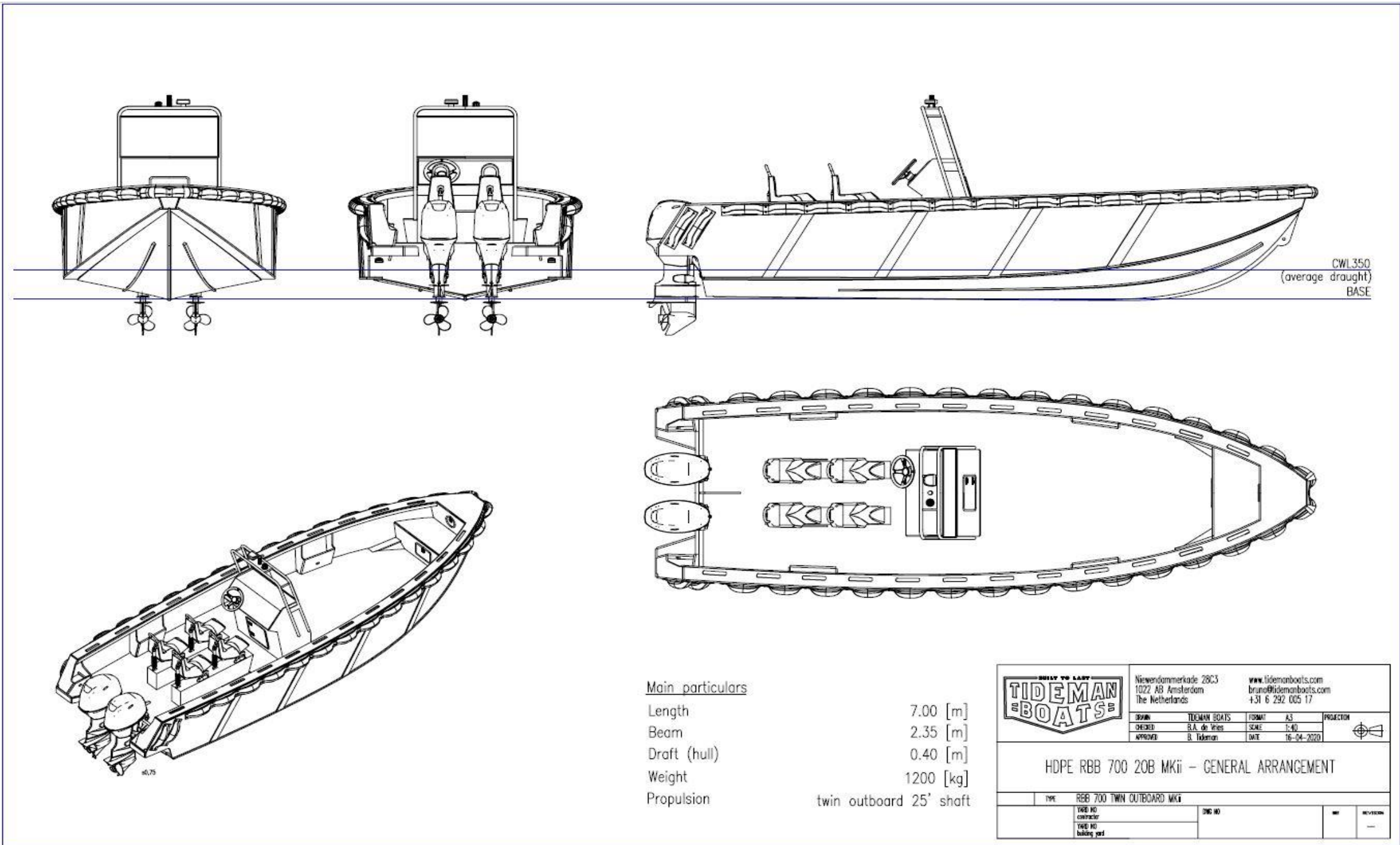
The vessel can be trucked anywhere in Europe



# ALKA NEVA

RBB 700 2OB

Support/Patrol/Crew Vessel



CWL350  
(average draught)  
BASE

Main particulars

Length 7.00 [m]  
 Beam 2.35 [m]  
 Draft (hull) 0.40 [m]  
 Weight 1200 [kg]  
 Propulsion twin outboard 25' shaft

		Nieuwendammerkade 28C3 1022 AB Amsterdam The Netherlands		www.tidemanboats.com bruno@tidemanboats.com +31 6 292 005 17	
		DESIGNED BY B.A. de Vries	CHECKED BY B. Tideman	FORMAT A3	SCALE 1:40
<b>HDPE RBB 700 2OB MKii - GENERAL ARRANGEMENT</b>					
TYPE	RBB 700 TWIN OUTBOARD MKii		DRG NO.	REV.	REVISION
Y&B NO					
CONTRACTOR					
BUILDING YARD					