

ALMA DEFENDER



Multicat - 1100hp, 12 TBP



CLASSIFICATION / FLAG

Built	1995
Flag	Togo
Trading Area	Coastal Waters (up to 30nm)
Call sign	5VAE9
Classification Society	Bureau Veritas
Class Ship	I + HULL * MACH Special

PRINCIPAL DIMENSIONS

Length o.a	18.63m
Breadth o.a	8m
Draft	1.8m
GRT	81
NRT	24
Clear Deck	103m ²

MISCELLANEOUS

Hydraulic Deck Crane	CPS 360M - Harbour : 3.29 tons at 10m - Offshore : 2.3 tons at 10m
Towing Winch	30 mT

OPTIONAL EQUIPMENT

Multi-beam support	
Inspection ROV	

MACHINERY / PROPULSION

Maximum speed	8 knots
Economic speed	6 knots
Main engines	2x Cummins KTA-19 - 550hp each
Propulsion	Twin screw fixed pitch propellers in nozzles
Auxiliary engines	100 Kva + 15 Kva
Bollard Pull	12 Tons

TANK / STORAGE CAPACITIES

Fuel	32 m ³
Fresh Water	44 m ³

NAVIGATION & COMMUNICATION SYSTEMS

Fully equipped

ACCOMMODATION

Berths	6
<i>incl. double cabins</i>	3
Fully air conditioned	

ALMA SHIPPING

Head office: 26 avenue de Saint Cloud 78000 Versailles

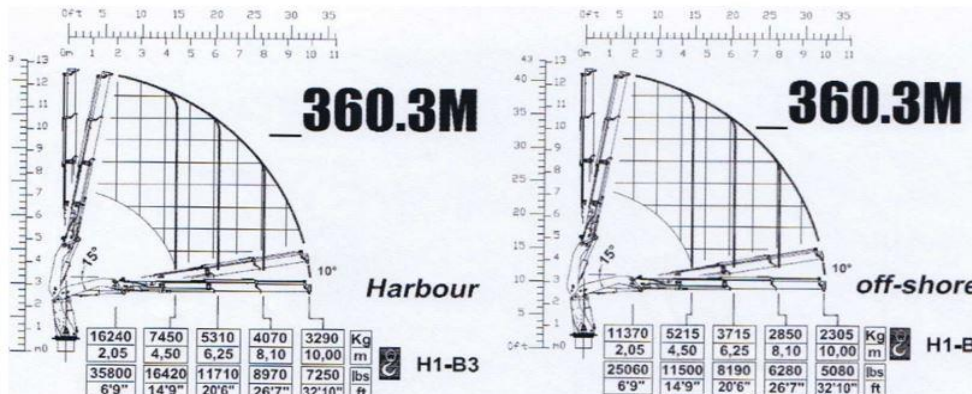
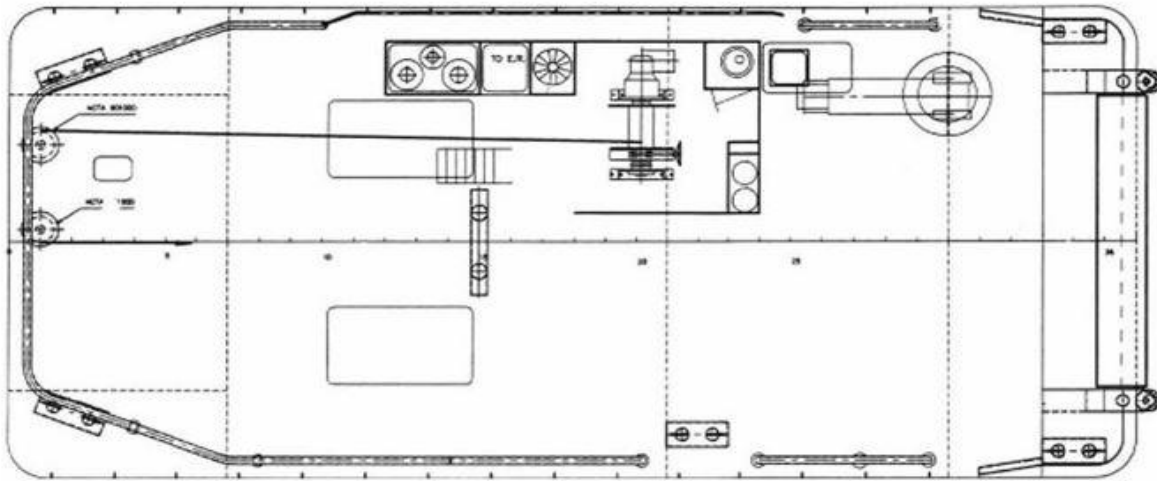
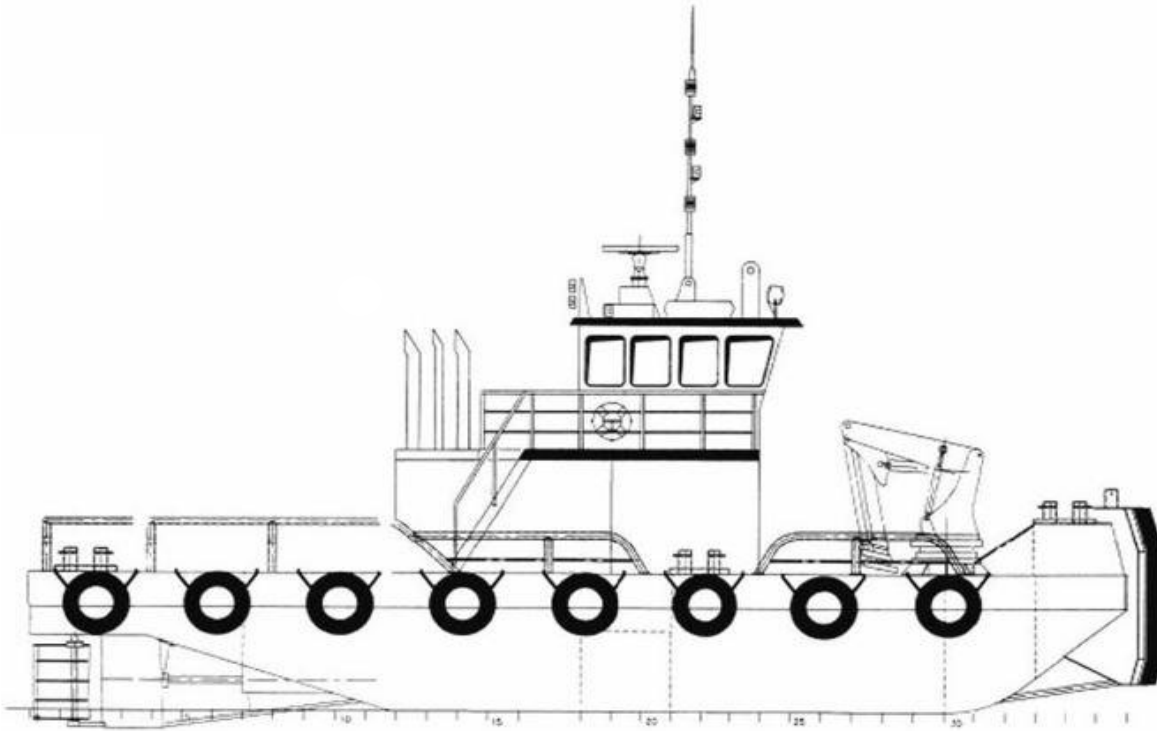
www.almashipping.com / chartering@almashipping.com

Details are believed to be correct but cannot be guaranteed and are subject to change

ALMA DEFENDER



Multicat - 1100hp, 12 TBP



ALMA SHIPPING

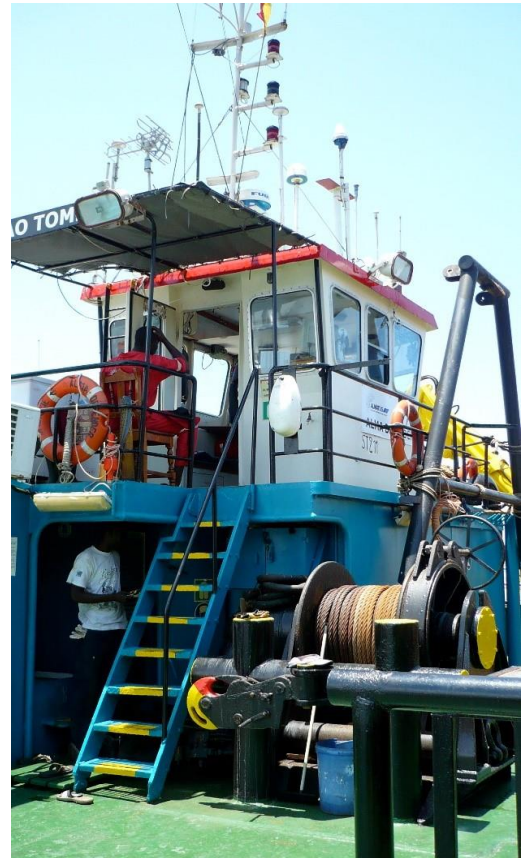
Head office: 26 avenue de Saint Cloud 78000 Versailles
www.almashipping.com / chartering@almashipping.com

Details are believed to be correct but cannot be guaranteed and are subject to change

ALMA DEFENDER



Multicat - 1100hp, 12 TBP



ALMA SHIPPING

Head office: 26 avenue de Saint Cloud 78000 Versailles

www.almashipping.com / chartering@almashipping.com

Details are believed to be correct but cannot be guaranteed and are subject to change