

COASTAL FIGHTER

MULTICAT



CLASSIFICATION / FLAG

Built	2009
Flag	Curacao
Trading Area	Coastal waters (up to 30nm)
Call sign	PJWB
IMO	9579418
Classification Society	Bureau Veritas
Class Ship	I+Hull*MACH special service Multipurpose vessel Coastal area

PRINCIPAL DIMENSIONS

Length o.a	21.6m
Breadth o.a	9.04m
Draft	1.8 - 2.37m
GRT	135
NRT	40
Free deck space	FWD deck : Approx. 81m ² AFT deck : Approx. 50m ²
Max. deck load	6 tons/m ²

MISCELLANEOUS

AH/Towing winch	50 tons
FO transfer pump	50m ³ /hr at 14 mwc
FW transfer pump	50m ³ /hr at 14 mwc
Hydraulic capstan	5 tons
Hydraulic deck crane	140 tm, 8.1tons at 14m
M/H towing hook FS	SWL : 20tons / TL : 30tons / RL : 20tons
M/H towing hook MS	SWL : 20tons / TL : 30tons / RL : 20tons
Tugger winch	10 tons

MACHINERY / PROPULSION

Maximum speed	9.5 knots
Economic speed	7 knots
Main engines	Cummins QSK19-M
Propulsion	Twin screw fixed pitch propellers in nozzles
Power output	1520 hp/1118 kW
Auxiliary engines	103 kVA / 107 kVA
Bollard pull	18.5 tons
Marine gears	Twin disc MG 5222

TANK / STORAGE CAPACITIES

Fuel	57m ³
Fresh Water	31 m ³

NAVIGATION & COMMUNICATION SYSTEMS

Fully equipped / GMDSS A1-A2-A3

ACCOMMODATION

Berths	8
<i>incl. double cabins</i>	2
<i>incl. single cabin</i>	1
Fully airconditioned / Galley / Sanitary facilities	

ALMA SHIPPING

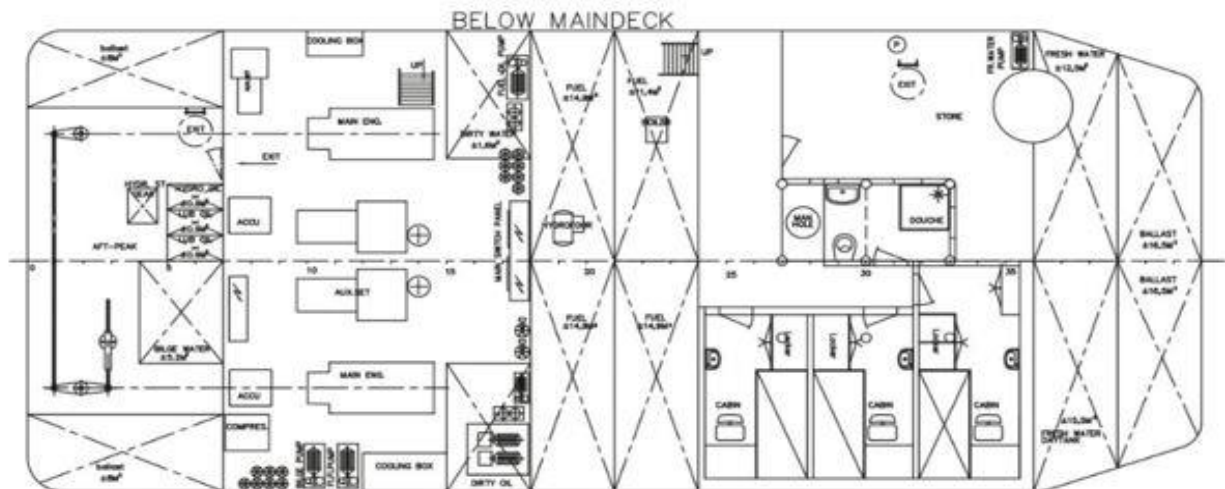
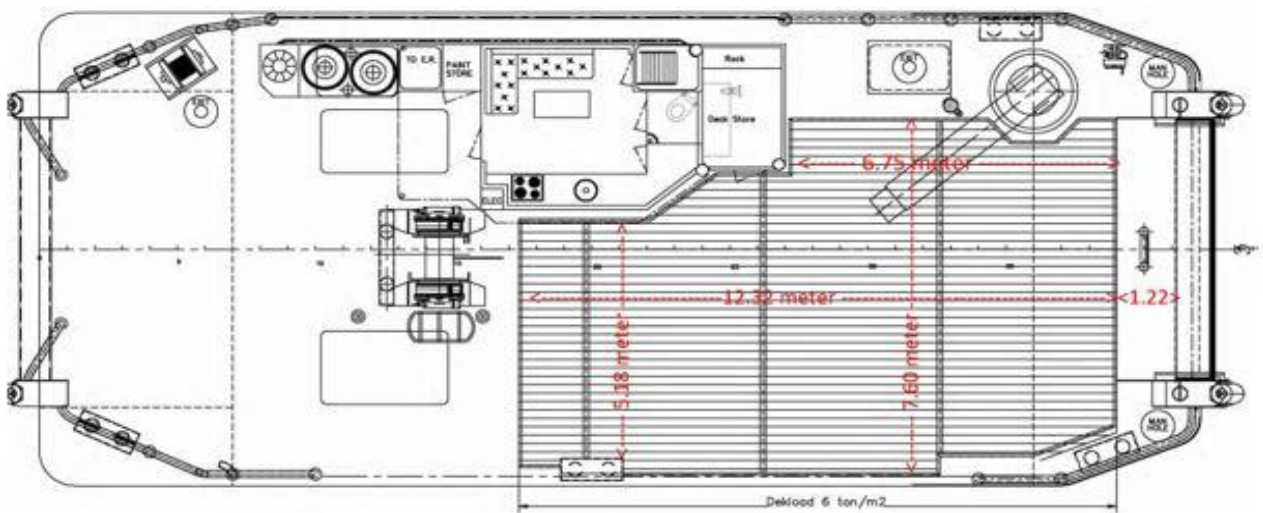
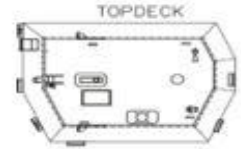
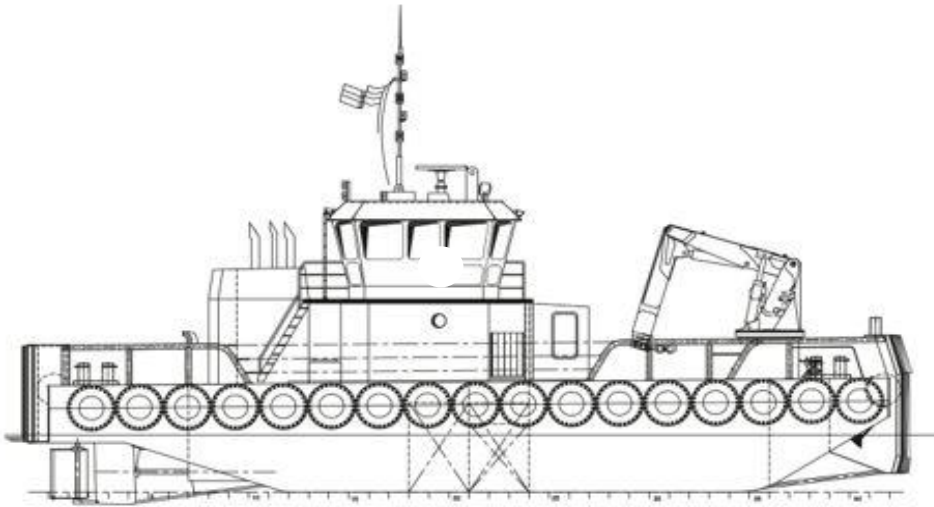
Head office: 26 avenue de Saint Cloud 78000 Versailles

www.almashipping.com / chartering@almashipping.com

Details are believed to be correct but cannot be guaranteed and are subject to change

COASTAL FIGHTER

MULTICAT



ALMA SHIPPING

Head office: 26 avenue de Saint Cloud 78000 Versailles

www.almashipping.com / chartering@almashipping.com

Details are believed to be correct but cannot be guaranteed and are subject to change

COASTAL FIGHTER

MULTICAT



ALMA SHIPPING

Head office: 26 avenue de Saint Cloud 78000 Versailles

www.almashipping.com / chartering@almashipping.com

Details are believed to be correct but cannot be guaranteed and are subject to change