

ALMA SAGA

Multipurpose Workboat & Survey Vessel



CLASSIFICATION / FLAG

Built	1985
Rebuilt	1999
Flag	BELIZE
Trading Area	Coastal area
MMSI	312 207 000
IMO	8607476
Classification Society	Bureau Veritas
Class Ship	Offshore supply vessel, tug

PRINCIPAL DIMENSIONS

Length o.a	32.8m
Breadth o.a	10m
Draft	1.25 - 1.39m
GRT	196
NRT	58
Clear Deck	122m ²
Max. Deck Load	3 ton/m ²

MISCELLANEOUS

Hydraulic Deck Crane	83 tm, 4.3 tons at 13.4m
	25 tm, 1.1 ton at 14.1m
Towing Winch	SWL 20 tons on top layer

OPTIONAL EQUIPMENT

Boat Landing
Multi-beam support
Inspection ROV
3 points mooring system

MACHINERY / PROPULSION

Maximum speed	10 knots
Economic speed	7 knots
Endurance	40 days
Main engines	3 x Mitsubishi S6B3-MPTA
Propulsion	Triple screw fixed pitch propellers
	1 x bow thruster
Auxiliary engines	2 x 100 Kva, 1 x 200 Kva
Bollard Pull	10 Tons
Marine gears	Twin disc MG-5091

TANK / STORAGE CAPACITIES

Fuel	40 m ³
Fresh Water	28 m ³

NAVIGATION & COMMUNICATION SYSTEMS

Fully equipped / GMDSS A1-A2-A3
Starlink System

ACCOMMODATION

Berths	16
	<i>incl. double cabins 6</i>
& 1 x accommodation container	with 2 double cabins
Spacious survey room	

ALMA SHIPPING

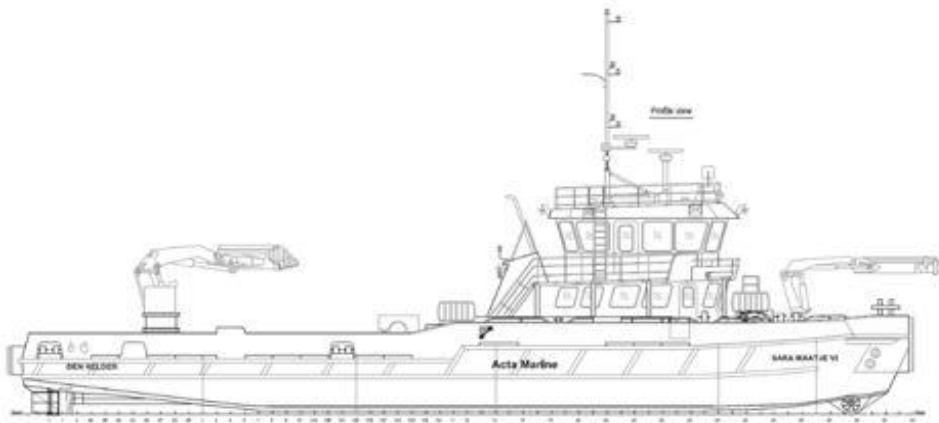
Head office: 26 avenue de Saint Cloud 78000 Versailles

www.almashipping.com / chartering@almashipping.com

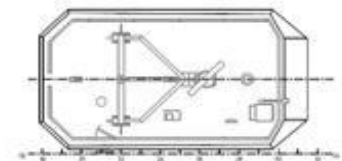
Details are believed to be correct but cannot be guaranteed and are subject to change

ALMA SAGA

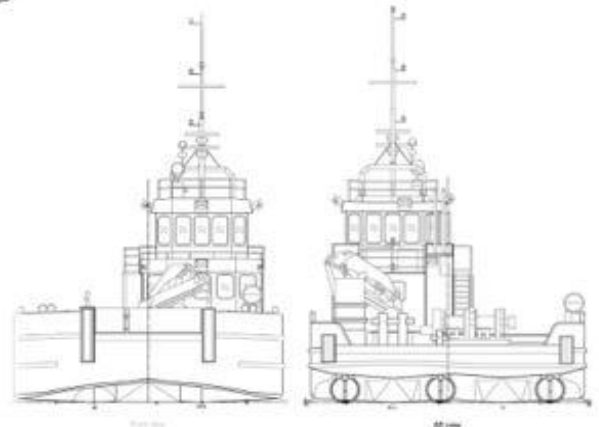
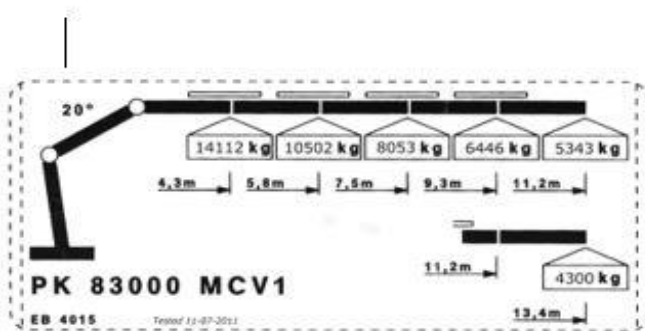
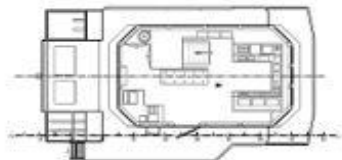
Multipurpose Workboat & Survey Vessel



Wheelhouse Top



Wheelhouse Deck



ALMA SHIPPING

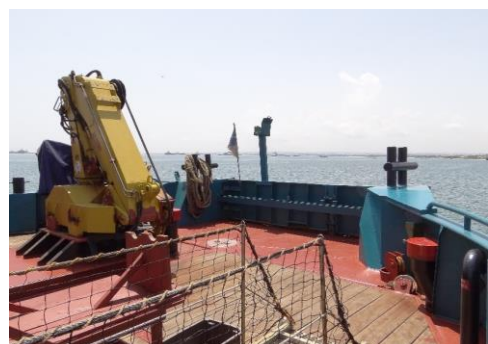
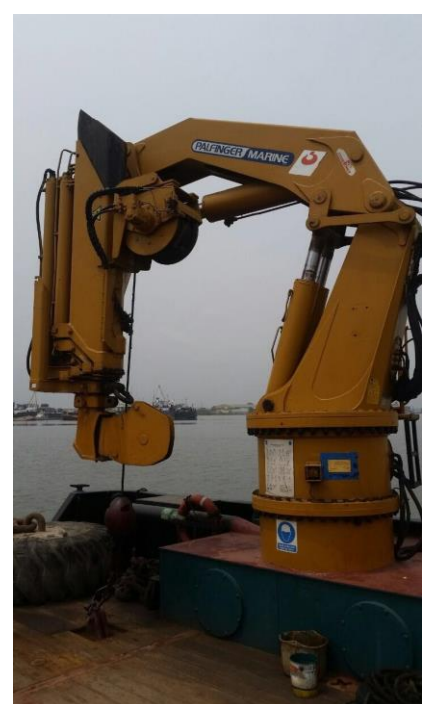
Head office: 26 avenue de Saint Cloud 78000 Versailles

www.almashipping.com / chartering@almashipping.com

Details are believed to be correct but cannot be guaranteed and are subject to change

ALMA SAGA

Multipurpose Workboat & Survey Vessel



ALMA SHIPPING

Head office: 26 avenue de Saint Cloud 78000 Versailles

www.almashipping.com / chartering@almashipping.com

Details are believed to be correct but cannot be guaranteed and are subject to change