

ALMA SURVEYOR 2



Survey - 380 hp



CLASSIFICATION / FLAG

Built	1993
Flag	Togo
Trading Area	Seagoing Launch
Call sign	5VAR4
IMO	8433837
Classification Society	Bureau Veritas
Class Ship	Launch
Class Notation	I+HULL*MACH

PRINCIPAL DIMENSIONS

Length o.a	20.28m
Breadth o.a	6.11m
Draft	0.9m
GRT	75
NRT	22
Clear Deck	35m ²

MISCELLANEOUS

Hydraulic Deck Crane	1 ton at 4.8m
Moonpool	

OPTIONAL EQUIPMENT

A-Frame	
Multi-beam support	
Inspection ROV	

MACHINERY / PROPULSION

Maximum speed	7.5 knots
Economic speed	5.5 knots
Main engines	Daf DK 1160
Propulsion	Twin fixed pitch propellers
	1 x bow thruster
Auxiliary engines	65 Kva

TANK / STORAGE CAPACITIES

Fuel	5 m ³
Fresh Water	5 m ³

NAVIGATION & COMMUNICATION SYSTEMS

Fully equipped / GMDSS VHF

ACCOMMODATION

Berths	6
<i>incl. double cabins</i>	3
Spacious survey room / Fully airconditioned	

ALMA SHIPPING

Head office: 26 avenue de Saint Cloud 78000 Versailles

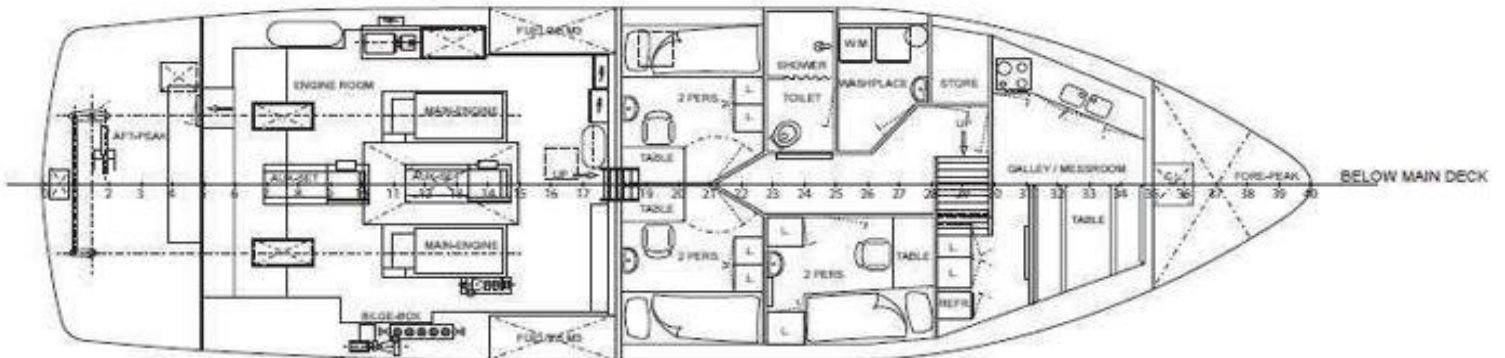
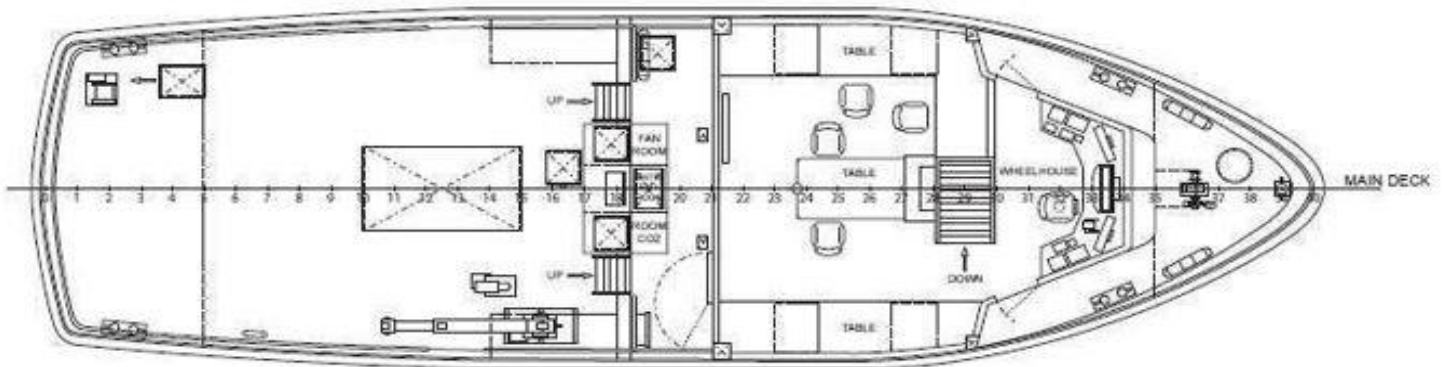
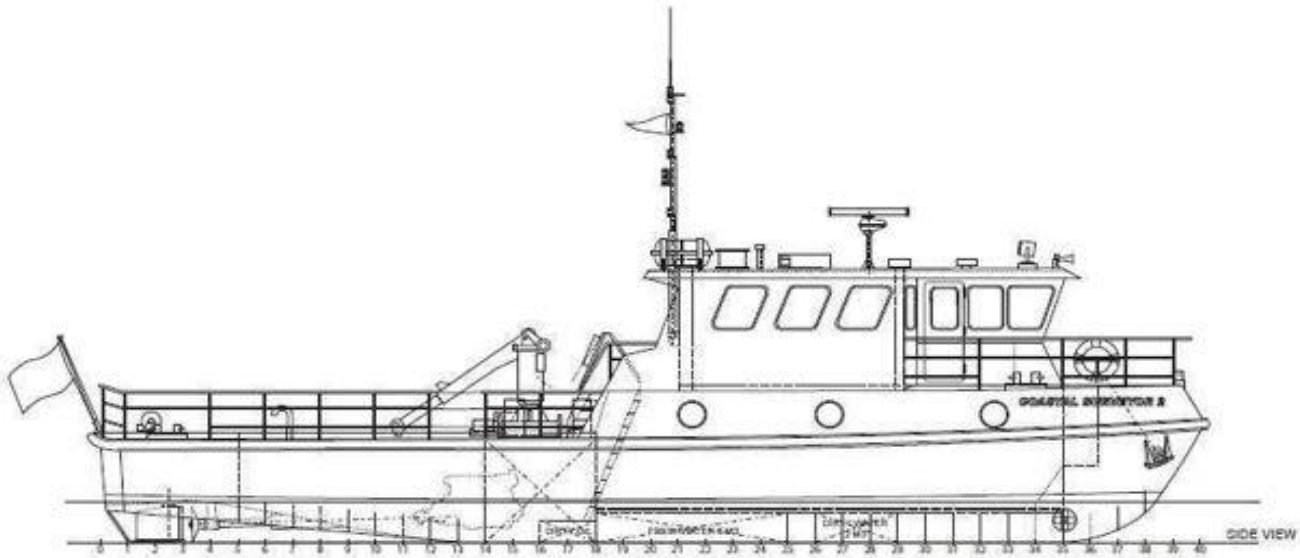
www.almashipping.com / chartering@almashipping.com

Details are believed to be correct but cannot be guaranteed and are subject to change

ALMA SURVEYOR 2



Survey - 380 hp



ALMA SHIPPING

Head office: 26 avenue de Saint Cloud 78000 Versailles

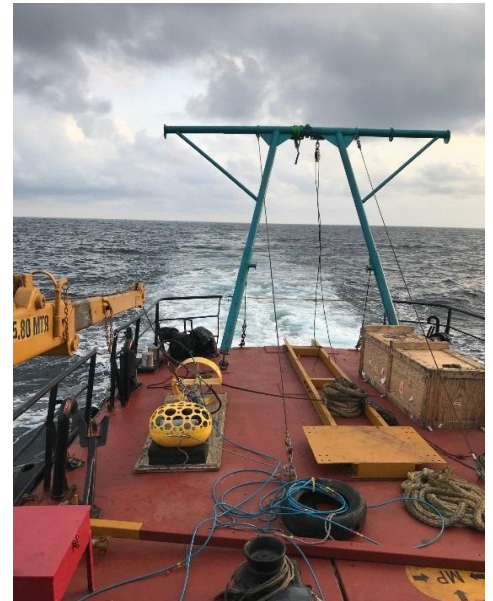
www.almashipping.com / chartering@almashipping.com

Details are believed to be correct but cannot be guaranteed and are subject to change

ALMA SURVEYOR 2



Survey - 380 hp



ALMA SHIPPING

Head office: 26 avenue de Saint Cloud 78000 Versailles

www.almashipping.com / chartering@almashipping.com

Details are believed to be correct but cannot be guaranteed and are subject to change