

ALMA YAKA

ASSISTANCE VESSEL / SUPPORT VESSEL



CLASSIFICATION / FLAG

Built	1995
Flag	Cameroon
Call sign	PDSP
Built according to	Bureau Veritas

PRINCIPAL DIMENSIONS

Length o.a	8.4m
Breadth o.a	3.5m
Draft	0.9m
GRT	7
NRT	2

MACHINERY / PROPULSION

Maximum speed	9 knots
Economic speed	7 knots
Main engines	Mitsubishi S6S
Propulsion	Twin fixed pitch propellers
Power output	178 hp/133 kW

OPTIONAL EQUIPMENT

Multibeam support

NAVIGATION & COMMUNICATION SYSTEMS

VHF / radar



ALMA SHIPPING

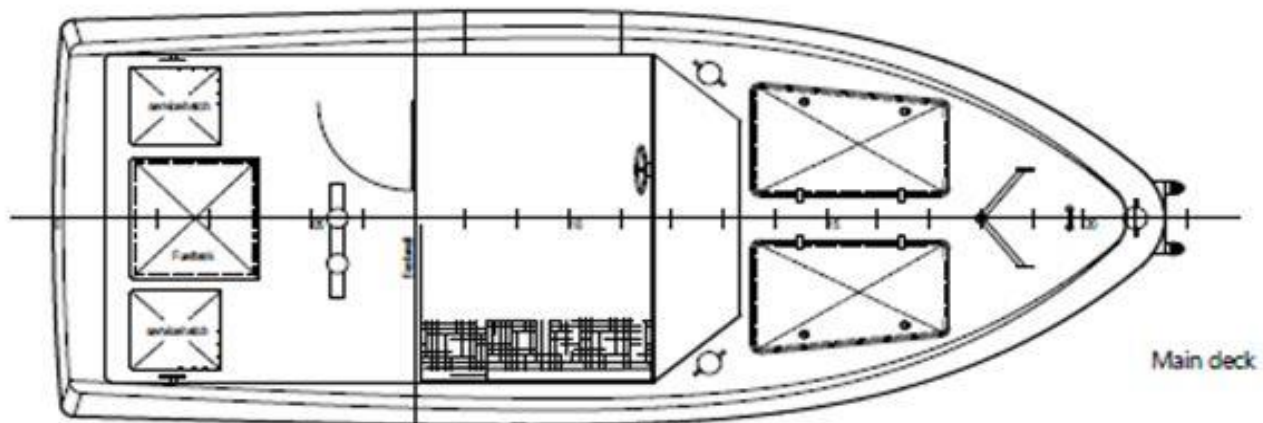
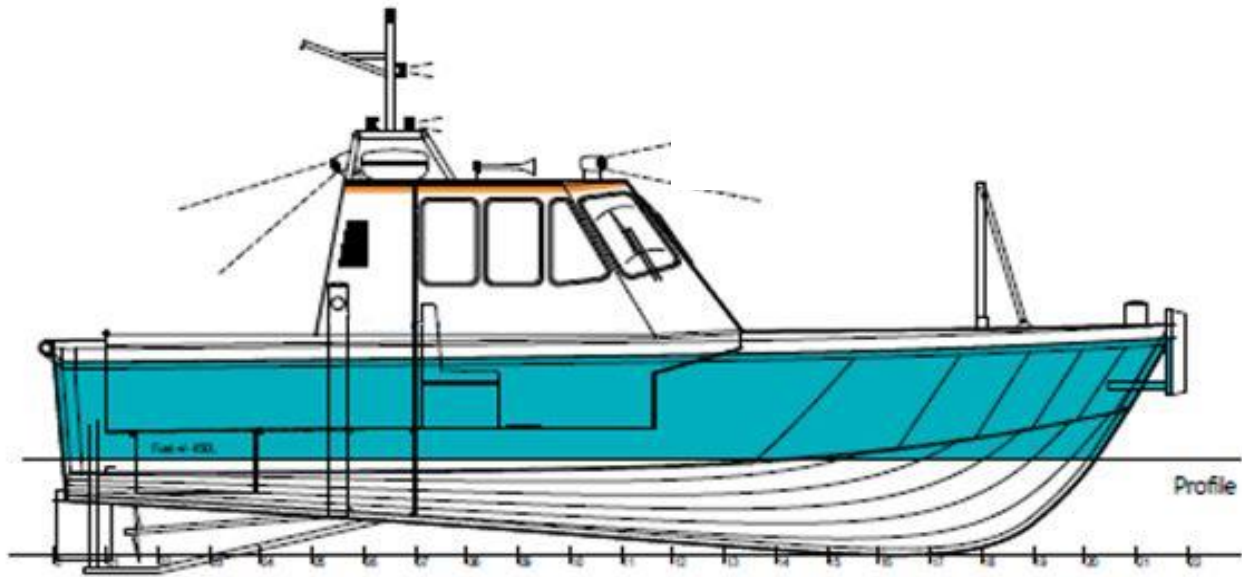
Head office: 26 avenue de Saint Cloud 78000 Versailles

www.almashipping.com / chartering@almashipping.com

Details are believed to be correct but cannot be guaranteed and are subject to change

ALMA YAKA

ASSISTANCE VESSEL / SUPPORT VESSEL



ALMA SHIPPING

Head office: 26 avenue de Saint Cloud 78000 Versailles

www.almashipping.com / chartering@almashipping.com

Details are believed to be correct but cannot be guaranteed and are subject to change